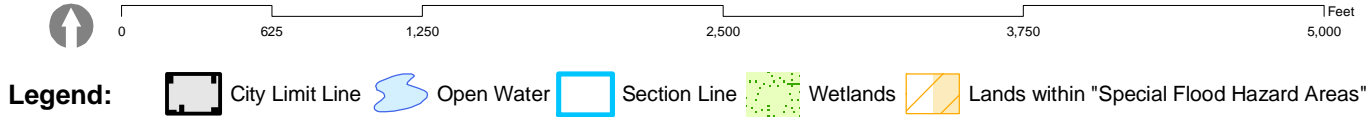
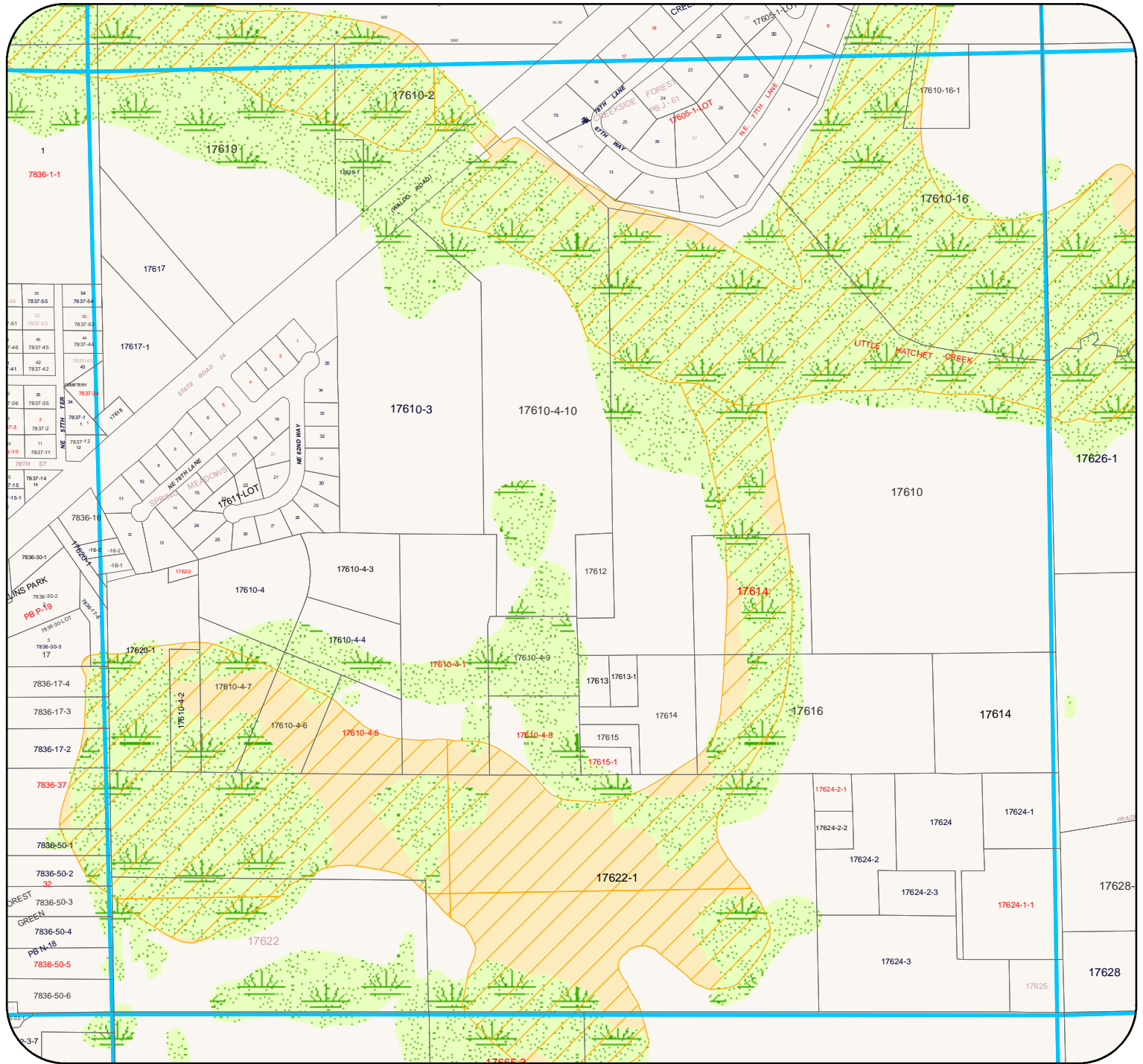


Wetlands and Floodplains

STR070921

Prepared by: Alachua County Department of Growth Management, 10 SW 2nd Avenue, Gainesville, FL 32601, (352) 374-5249, Date: Jul 27, 2005



DEFINITION FOR FLOOD PLAINS:

"Special Flood Hazard Areas" (SFHA) refer to areas prone to flooding according to 1996 Flood Insurance Rate maps (FIRMs), produced by FEMA. Areas outside of SFHAs include at least one of the following: areas classified as 500-year flooding; an area inundated by 100-year flooding with average depths of less than 1 foot or with drainage areas less than 1 square mile; an area protected by levees from 100-year flooding; or an area that is determined to be outside the 100- and 500-year floodplains

DOCUMENTATION:

Data documentation is located at <http://www.fgdl.org/fgdl/docs/metadata/html/>

- * Land Use: sjlu95.htm, srlu95.htm, swlu95.htm
- * Wetlands: nwip.htm, nwil.htm
- * Soils: ssoils.htm
- * Hydrography: hy24l.htm, hy24p.htm
- * Flood Plains: fema96.htm

DATA SOURCE FOR WETLANDS:

Wetland Portions of the following datasets:

- * 1995 St John's River Water Management District Land Use.
- * 1995 Suwannee River Water Management District Land Use.
- * 1995 Southwest Florida Water Management District Land Use.
- * NWI-National Wetlands Inventory.
- * Hydric soils subset of the County Soil Survey maps published by the United States Department of Agriculture (USDA) Natural Resources Conservation Service (NRCS) as the Soil Service Geographic (SSURGO) data set.
- * Hydrological features from USGS 1:24000 scale Digital Line Graphs (7.5' quadrangles).